

# 2022 Use of Force Statistical Report

A statistical summary of reported Use of Force Incidents by the  
Hamilton Police Service



**Training Branch  
Use of Force Section**

**HAMILTON  
POLICE SERVICE**  
Together. Stronger. Safer.

# Table of Contents

## Contents

<b>Introduction</b> .....	2
<b>Relevant Training</b> .....	3
<b>Methodology</b> .....	3
<b>Statistical Summary of Incidents</b> .....	4
<b>Statistical Summary of Occurrences</b> .....	5
<b>Total Use of Force Options</b> .....	5
<b>Firearm Discharged</b> .....	6
<b>Firearm Pointed</b> .....	6
<b>Handgun Drawn</b> .....	6
<b>Aerosol Weapon (Oleo Capsicum – (O/C)</b> .....	7
<b>Impact Weapon Soft</b> .....	7
<b>Impact Weapon Hard</b> .....	7
<b>Empty Hands - Hard</b> .....	7
<b>Empty Hands - Soft</b> .....	7
<b>Conducted Energy Weapon (CEW)</b> .....	8
<b>Use of Force by Incident Type</b> .....	9
<b>Use of Force by Branch</b> .....	10
<b>Use of Force Reporting</b> .....	10
<b>Use of Force by Years of Service</b> .....	11
<b>Suspects/Police Officers Injured/Require Medical Attention</b> .....	11
<b>Use of Force Incidents and Suspect Weapons</b> .....	12
<b>Use of Force by Subject Race</b> .....	12
<b>Disparity Index</b> .....	14
<b>Use of Force by Occurrence Locations</b> .....	17
<b>Use of Force in Relation to Public Contacts</b> .....	19
<b>Conclusions</b> .....	19
<b>Appendix – Use of Force Form</b> .....	20



# 2022 Use of Force Statistical Report

## Introduction

Police officers may be required to use force to protect the public and themselves. Section 25 of the Criminal Code of Canada grants police officers authority on reasonable grounds to use as much force as is necessary to carry out their duties. The Hamilton Police Service (HPS) believes in using only the minimum force required in carrying out our duties.

This report provides a statistical summary of the 2022 Use of Force (UOF) reports, where HPS members used a particular UOF option. This report also compares a number of factors, such as:

- The number of 2022 UOF reports compared to the number of incidents from 2018-2022.
- The number of 2022 occurrences where force was used compared to the occurrences from 2018-2022
- The total number of UOF in 2022 compared to the total UOF from 2018-2022.
- UOF incidents by Unit/Branch and years of service

The data used to prepare this report is compiled from UOF data submitted to the Ministry of the Solicitor General. Beginning January 1, 2020, the Ministry introduced new reporting requirements that include the addition of Conductive Energy Weapon (CEW) displays, race-based data as well as the way UOF report data is counted. Officers must now submit a full UOF report anytime a CEW is displayed removed from its holster in public.

Based on direction from the Ministry of the Solicitor General, data from previous UOF reports has been adjusted to include the CEW display category.

As identified in the Police Services Act and Hamilton Police Service policy and procedure, HPS members shall complete and submit the Ministry's UOF report prior to the completion of their shift under the following circumstances:

- Draws a handgun in the presence of a member of the public, excluding a Member of the Police Service while on duty, points a firearm at a person, or discharges a firearm other than on a Police Range; in the course of a training exercise, target practice or ordinary firearm maintenance, in accordance with Service Policies and Procedures
- Uses a weapon other than a firearm on another person, with the exception of a weapon other than a firearm used on another Member of a Police Service in the course of a training exercise in accordance with Service Policies and Procedures
- Uses physical force on another person that results in an injury requiring medical attention, with the exception of physical force used on another Member of a Police Service in the course of a training exercise in accordance with Service Policies and Procedures
- Handles a Police Service Dog where the dog bites a suspect or any member of the public as the result of the involvement of the Canine Branch
- While operational as a Mounted Unit Officer, uses the equine to apply force to a member of the public that results in an injury requiring medical attention
- Draws or deploys a Conducted Energy Weapon (CEW) in the presence of a member of the public

This report summarizes the incidents in which a UOF report was submitted.

The UOF options tracked by UOF reports are as follows:

- Firearm Discharged
- Firearm Pointed
- Handgun Drawn



- Aerosol Weapon (Oleoresin Capsicum (O/C) spray or foam)
- Impact Weapon Hard (ASP Baton)
- Impact Weapon Soft (ASP Baton)
- Empty Hands Hard
- Empty Hands Soft
- Other (K9 bites, Mounted Patrol Unit, weapons of opportunity)
- CEW display
- CEW deployed

## Relevant Training

De-escalation remains a cornerstone for police interactions. As such, de-escalation training is heavily emphasized throughout the three months of training Police receive at the Ontario Police College. It is a component in each of the core subjects they receive, including Officer Safety, Firearms, Defensive Tactics and Communication. De-escalation and articulation are incorporated in annual training and requalification.

In 2022, the Training Branch continued to teach de-escalation techniques, which emphasizes communication skills, rapport building, and emotional intelligence in practical skills scenarios. The Training Branch uses scenario-based training for all officers, which requires them to demonstrate the de-escalation techniques taught. Crisis Intervention Training (CIT) is also delivered to all new officers. CIT allows officers training in de-escalation techniques, understanding different mental illnesses, learning about available Hamilton community resources and providing a more comprehensive understanding of the Ontario Mental Health Act.

Active Bystandership for Law Enforcement (ABLE) was implemented as part of Block Training for 2022/2023. ABLE authorizes and empowers officers to intervene in each other's actions that may create unnecessary harm, regardless of their rank. ABLE teaches how to intervene, accept intervention successfully, and protect those who do intervene. It creates a culture that expects and supports intervention.

The Use of Force Model governs all interventions with members of our community and includes officer responses, which are present in all interactions, such as "Officer Presence" and "Communication". These two responses by officers form the foundation of de-escalation intervention, and are valid response options throughout the entire Model as circumstances dictate.

## Methodology

The data used for analysis is derived from the UOF reports submitted to the Ministry of the Solicitor General (Appendix A). HPS has recognized the need for improvement in capturing this information for analysis and has created an automatic tool that transfers the data from the UOF form to the HPS data warehouse for further analysis. It is important to note that each officer is responsible for submitting their own report following their shift. These forms are reviewed by the Training Branch to evaluate appropriate use of force. The data quality of these forms are subject to what the officer selects and while these forms are reviewed, there are still exists opportunities for data quality issues to arise. In 2023, HPS will be establishing further procedures to ensure compliance with policy.

Tactical units such as HPS' Emergency Response Unit are able to submit Team Reports, which summarizes the force used on behalf of all tactical members present. The forms have been reviewed to the best of the Service's ability by the Training Branch.

Readers are encouraged to exercise caution when drawing conclusions on Use of Force trends due to the reporting requirements. The presence of Team and Individual submissions and Use of Force on animals presents challenges to concluding whether Use of Force is increasing or decreasing.

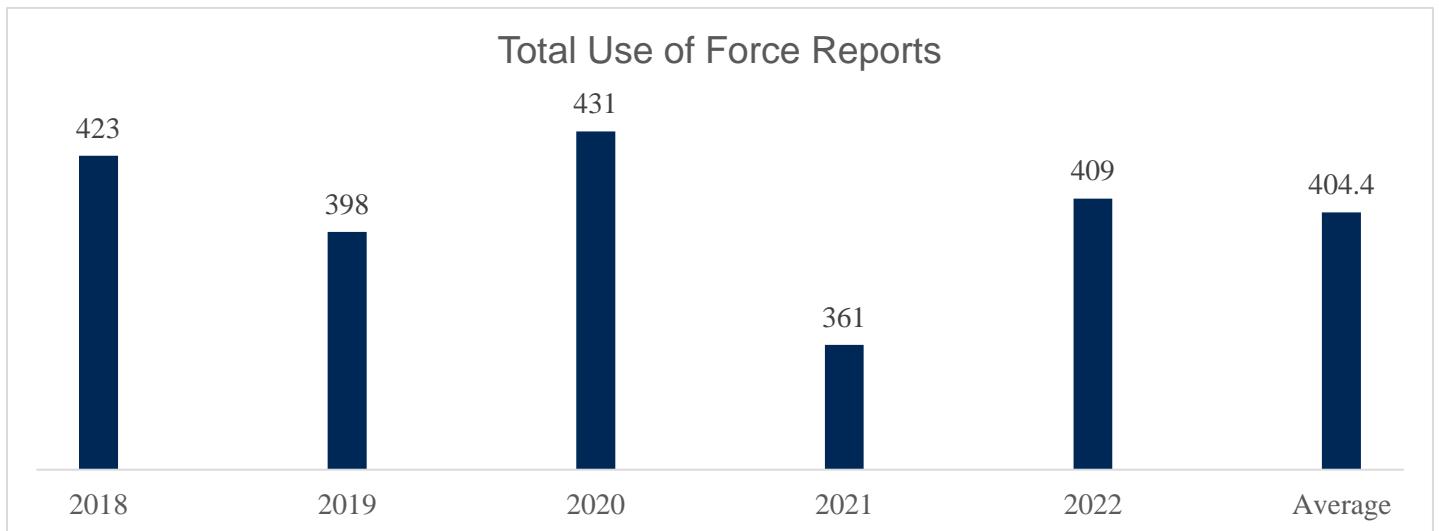


The analysis below is limited to a cross tabulation of select UOF Report attributes. These include Total Use of Force Submissions, Total Trended Use of Force Occurrences, Total Involved Subjects, Total Incidents, Total Use of Force Options Used, Total Use of Force by Call Types, Total Use of Force by Branch, Total Use of Force by Years of Service, Weapons Carried by Subject, and Perceived Race. This year, HPS has conducted analysis in compliance with the Data Standards for the Identification and Monitoring of Systemic Racism to evaluate disparities between populations on use of force using a Disparity Index. A disparity index will only showcase the presence of a disparity and not whether members are receiving fair and equitable treatment by an organization<sup>1</sup>.

Occurrences involving an incident where force is used are complex and officers may complete the report differently depending on the context of the situation and individual perceptions. For example, officers may use force on separate individuals and vary in categorizing elements of the occurrence like the call type, weapons carried by subject, etc. In addition, officers have the ability to select multiple categories for some attributes within the report and not for others. This can limit the context of the report. Each section will denote whether the officer can only select one or more than one option. Animal related Use of Force and Use of Force where no subject was present have been removed from some metrics to refine the analytical context and are denoted within the below sections.

### Statistical Summary of Incidents

During the five-year period from 2018– 2022, the average number of incidents reported was **404.4** incidents per year, with **423** incidents in 2018 and a high of 431 incidents in 2020. The total number of UOF incidents in 2022 is **409**, which is above the five-year average.



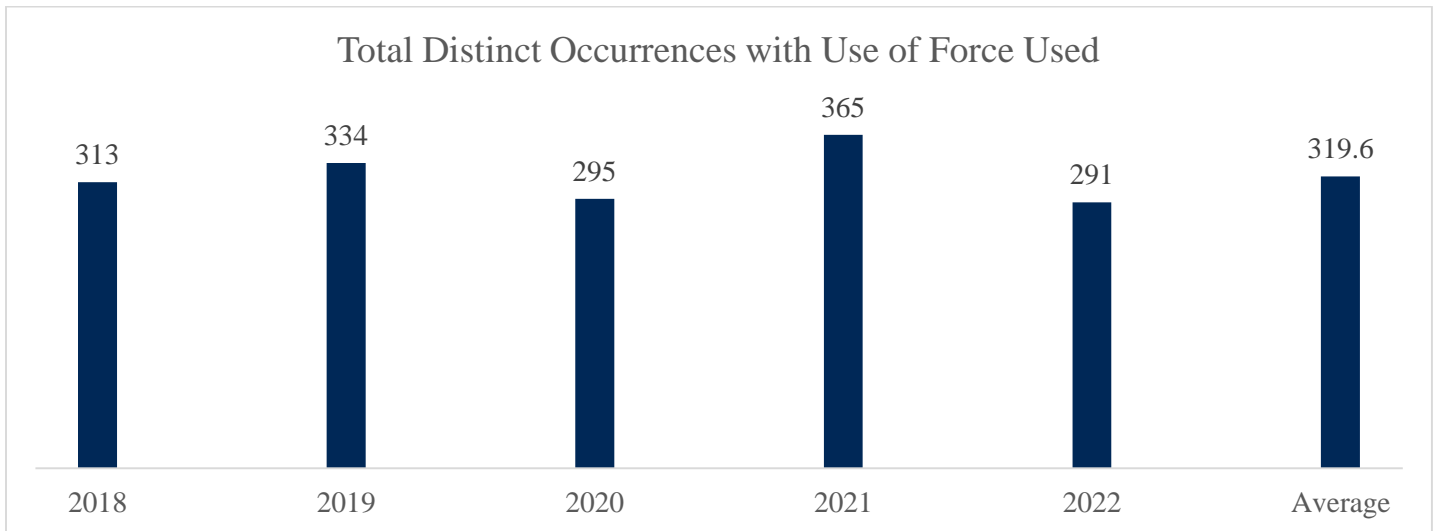
In 2022, there were 291 occurrences where officers submitted a UOF report. In total, HPS officers completed 409 UOF reports. This report analyzes the 409 reports. Out of the 409 reports, 23 involved using force on an animal. In total 516 distinct subjects were involved in the Use of Force reports.

<sup>1</sup> (Data Standards for the Identification and Monitoring of Systemic Racism, 2022)



## Statistical Summary of Occurrences

During the five-year period from 2018– 2022, the average number of occurrences where police responded and where force was reported was **319.6** per year. There were **313** incidents in 2018 and a high of **365** incidents in 2021. The total number of occurrences in 2022 is **291**, which is below the five-year average.



## Total Use of Force Options

Officers are required to indicate all the use of force options used during the encounter. The application of use of force is progressive and multiple instances of force can be applied to a subject. The table below tabulates all the use of force options reported on the UOF reports for both team and individual reports.

### Total Options Used, Five Year Trend

	Firearm Discharge	Firearm Pointed	Handgun Drawn	Aerosol Weapon	Impact Hard	Impact Soft	Empty Hands Hard	Empty Hands Soft	K9 Bite / Misc	CEW *
2018	28	125	39	2	3	1	23	36	2	164
2019	28	128	29	2	4	1	16	23	1	166
2020	27	185	42	1	3	0	17	14	3	139
2021	19	132	91	0	3	1	22	37	0	145
2022	<b>26**</b>	<b>163</b>	<b>108</b>	<b>6</b>	<b>4</b>	<b>1</b>	<b>32</b>	<b>50</b>	<b>0</b>	158
Avg	26	147	62	2	3	1	22	32	1	154

\*Based on direction from the Ministry of the Solicitor General, data from previous UOF reports has been adjusted to include the new CEW display category.

\*\* All but 3 Firearm Discharges involved an animal and not a person





## 2021 vs 2022 Options Used / Total Incidents

Option	2021	2022	Percentage increase or decrease
Firearm Discharged	19	26	37%
Firearm Pointed	132	163	23%
Handgun Drawn	91	108	19%
Aerosol Weapon	0	6	-
Impact Hard	3	4	33.3%
Impact Soft	1	1	-
Empty Hand Hard	22	32	45.5%
Empty Hand Soft	37	50	35%
K9 Bite/Other	0	0	-
CEW (both modes)*	145	158	9%
<b>Total Options</b>	<b>450</b>	<b>548</b>	<b>21.7%</b>

\*Based on direction from the Ministry of the Solicitor General, data from previous UOF reports has been adjusted to include the new CEW display category.

### Firearm Discharged

The discharging of a service pistol, carbine, or one of the tactical firearms is a serious but uncommon use of force. Officers are taught through the Ontario UOF Model and Police Services Act Regulation 926, Sections 9 and 10: “that they shall not draw a handgun, point a firearm or discharge a firearm unless he or she believes, on reasonable grounds, that to do so is necessary to protect against loss of life or serious bodily harm,” or “to call for assistance in a critical situation, if there is no reasonable alternative; or to destroy an animal that is potentially dangerous or is so badly injured that humanity dictates that its suffering be ended.”

There were **26** incidents in 2022 where Hamilton officers discharged a firearm. This is a 32% increase compared to the **19** incidents in 2021. The five-year average for discharge firearms is **25.4** incidents per year. The most common use of service firearms is to euthanize injured animals. In 2022, **23** firearm discharge incidents were for this purpose.

### Firearm Pointed

The five-year average for firearm pointed is **147** incidents per year. In 2022, there were **163** firearm pointed incidents. Of these incidents, 61 were due to high-risk search warrants or arrests conducted by the Emergency Response Unit (ERU). In 2021, there were **132** incidents indicating a 23% increase.

### Handgun Drawn

The drawing of a member’s handgun from its holster is different than pointing of a firearm. As per Regulation 926 s. 14.5(1)(a), a UOF Report is only submitted when a handgun is drawn in the presence of a member of the public. Officers are taught they can only draw their handgun if “he or she believes, on reasonable grounds, that to do so is necessary to protect against loss of life or serious bodily harm.” There were **108** incidents in 2022 where an officer drew their handgun in front of a member of the public. This is above the five-year average of **62** incidents per year and a 19% increase from **91** incidents in 2021.



## Aerosol Weapon (Oleo Capsicum – (O/C))

O/C is classified as an “intermediate weapon” and a subject/threat must exhibit at minimum, “actively resistant”<sup>2</sup> behavior before its use can be considered. There were **six** O/C incidents in 2022, which is above the five-year average of **two** incidents per year and an increase from **0** incidents in 2021.

The use of O/C has continued to decrease since the introduction of the CEW in 2005. In 2004, O/C was deployed **68** times but its use plummeted to **39** incidents in 2005 when CEWs were introduced. It was anticipated that O/C use would continue to decline or plateau as CEW use became more widespread. Overall, O/C use has generally declined since 2005.

## Impact Weapon Soft

Impact weapons “soft” refers to using the ASP Baton as a point of leverage while depressing a pressure point on a subject. This option would generally be applied to suspects displaying passive resistant to active resistant behavior and historically this option is rarely utilized. There was **one** reported incident of Impact Weapon Soft in 2022, showing a 0% change from **one** incident in 2021 and the same as the five-year average of one incident per year.

## Impact Weapon Hard

Impact weapons “hard” refers to using the ASP Baton to strike an “assaultive” subject. The ASP Baton was used **four** times in 2022 to strike a subject displaying assaultive behavior, which is above the five-year average of **three** incidents per year and a 33% increase from the **three** incidents in 2021.

## Empty Hands - Hard

The use of empty hands “hard” refers to the striking of an assaultive person. This would include punches, kicks, elbow strikes, knee strikes and grounding techniques. As per Reg. 926 s.14(c), an officer is only required to submit a report for Empty Hands Hard if they “use physical force on another person that results in an injury requiring medical attention.” However, an officer is also required to submit a report if they use another force option that requires a report in conjunction with Empty Hands Hard even though medical attention was not required.

There were **32** reported incidents in 2022 of Empty Hands Hard. This is slightly higher than the five-year average of **22** incidents per year and an increase of 45.5% when compared to 22 incidents in 2021.

## Empty Hands - Soft

The use of empty hands “soft” refers to the application of joint locks, some grounding techniques and/or pressure points to a person. As per Reg. 926 s.14(c), an officer is only required to submit a report for Empty Hands Soft if they “use physical force on another person that results in an injury requiring medical attention” or if they use this option in conjunction with another option that requires mandatory reporting. In 2022, there were **50** reported incidents of Empty Hands Soft. This is above the five-year average of **29** incidents per year and an increase of 35% compared to 37 incidents in 2021.

---

<sup>2</sup> The subject uses non-assaultive physical action to resist, or while resisting an officer’s lawful direction.





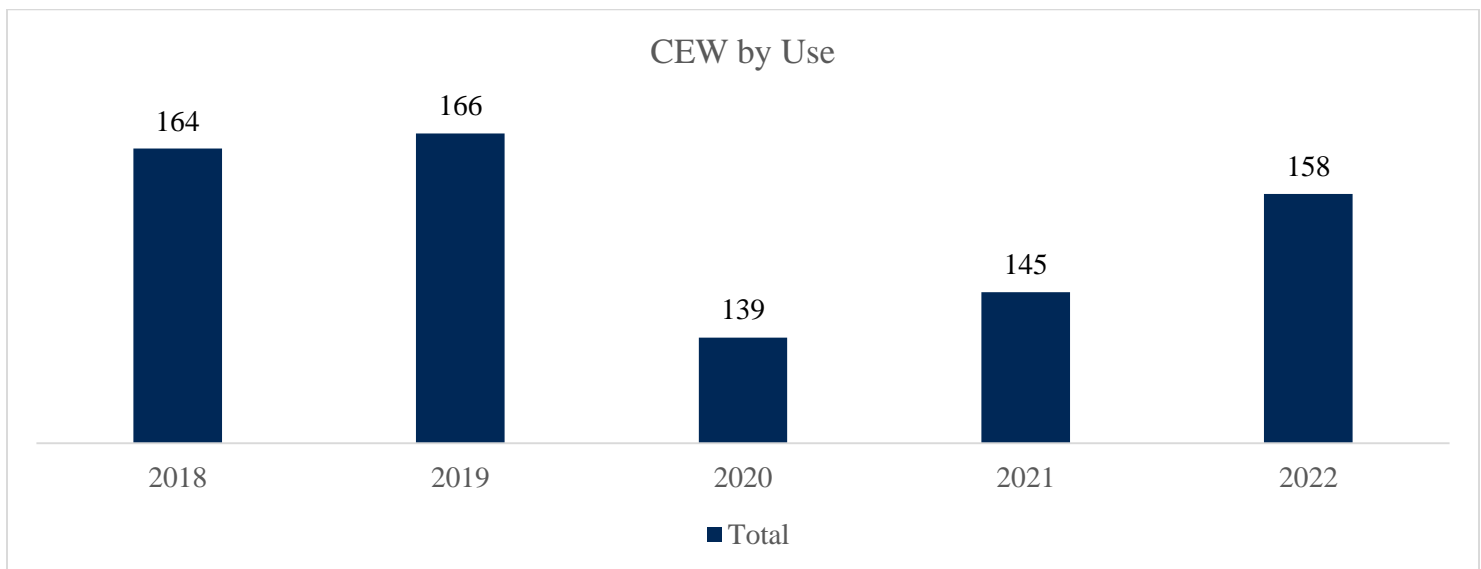
## Conducted Energy Weapon (CEW)

CEWs, also known as TASERs, were authorized for limited police use in Ontario in late 2004. The program was expanded in 2014 to include all active police officers. Currently, there are approximately **852** HPS officers qualified in CEW. Beginning January 2020, all officers must now submit a full UOF report anytime a CEW is removed from its holster in public.

As identified in the Ontario UOF Model, the CEW is an “intermediate weapon” which police can consider to use when a subject exhibits assaultive behavior and/or imminent need to take control of a person before CEW use can be considered. This is a reflection of current national and provincial best practices.

The CEW was used **158** times in 2022. This is an increase of 9% from the **145** incidents in 2021. In **67** incidents, the CEW was deployed meaning probes were fired from the cartridge. In **91** incidents, the CEW was used in display mode meaning it was a show of force/de-escalation tool and no probes were fired from the cartridge. As per the below chart, the majority of CEW use is in the display mode.

## CEW by Use

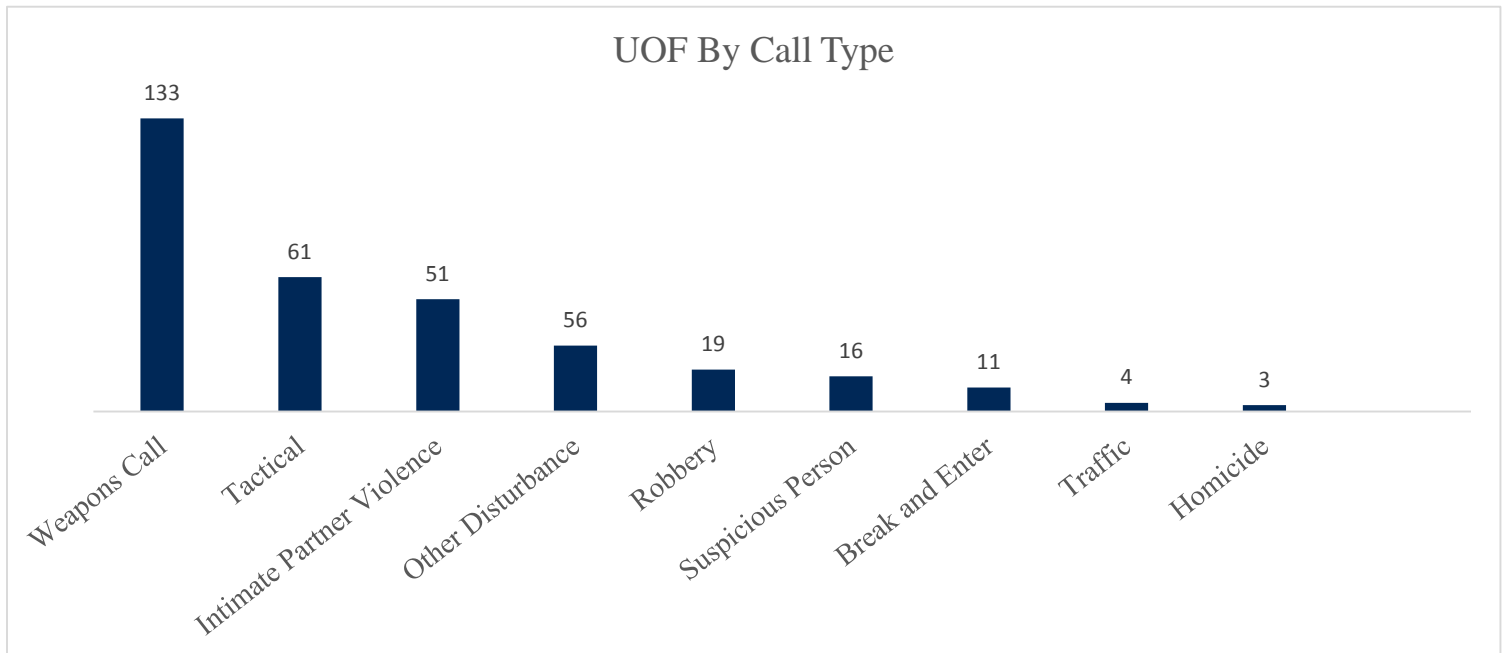


## Use of Force by Incident Type

On the 2022 UOF Reports, UOF incidents were grouped into the following call types:

1. Alarm (Robbery or Home Security)
2. Break and Enter
3. Domestic Disturbance
4. Homicide
5. Other Disturbance
6. Robbery
7. Serious Injury
8. Suspicious Person
9. Traffic
10. Weapons Call
11. Search warrants/Criminal Code investigations
12. Persons in Crisis
13. Tactical (Are all in relation to Search Warrant executions)

The chart below excludes all animal related Use of Force Reports (n=23).

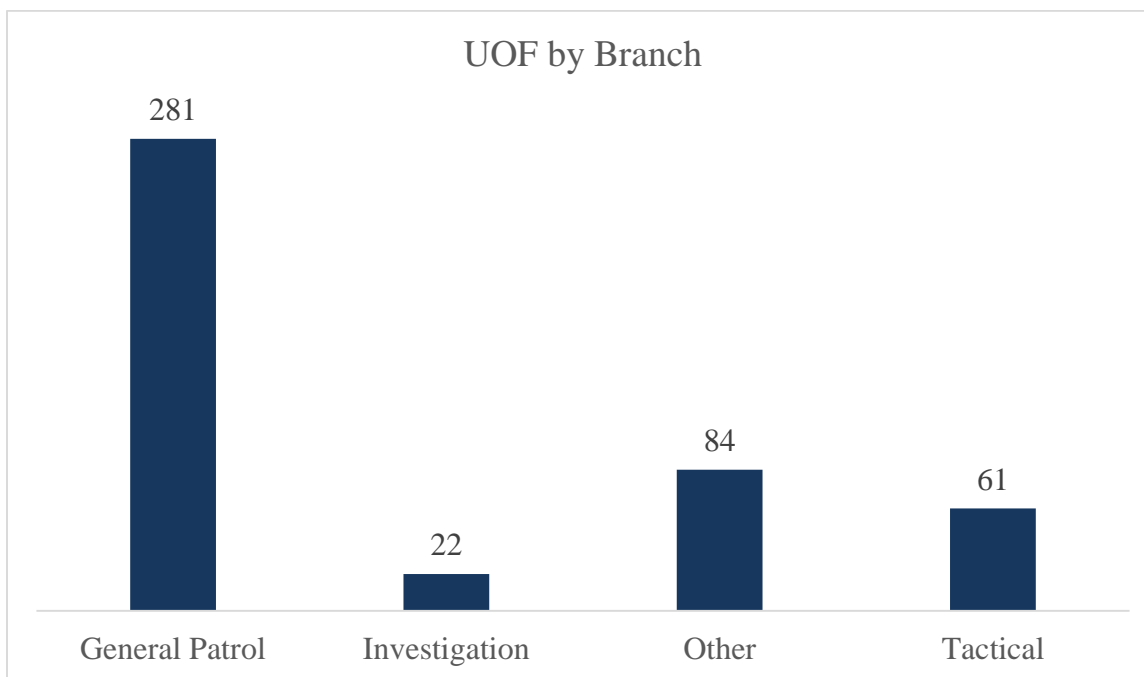


NOTE \*these chart totals do not equal the number of UOF Reports submitted, as officers have the option of identifying more than one call type. For example, Officers could respond to a disturbance which could also be a weapons call. "Other" can denote multiple types of calls, as it is the responsibility of the officers on scene to determine the call type. Disturbance can be any number of types of calls. The column marked as Tactical are reports submitted by the ERU and include high risk search warrants, vehicle stops and arrests.



## Use of Force by Branch

Under the new UOF report, the Ministry of the Solicitor General has identified seven separate types of assignments, which include Drugs, Foot Patrol, General Patrol (Uniform Patrol), Investigation, Off Duty, Traffic, and Other (such as COAST, MCRRT, Mounted, Marine). For the purposes of this report, ERU has been captured under Tactical. This portion is filled out by the officers at the time of the incident.



## Use of Force Reporting

If a UOF report is required because of the actions of several officers in a common incident, each officer shall submit their own UOF report. The exception is for ERU team deployment, where they are permitted to submit a 'team' report.

**New for 2023:** the Ministry of the Solicitor General updated the Use of Force Report and now allows for Team Reporting for all police officers, not just ERU.

If any two or more officers are acting in co-ordination in response to a single event, and if during their response two or more officers do any of the following, one of the officers who has taken one of the following actions, and who has been designated by their supervisor, may submit a report on behalf of all the officers:

- draws a handgun in the presence of a member of the public;
- points a firearm at a person;
- draws and displays a conducted energy weapon to a person with the intention of achieving compliance;
- points a conducted energy weapon at a person.

The member must personally complete an individual report if the member:

- discharges a firearm;
- uses a weapon on another person;
- discharges a conducted energy weapon;

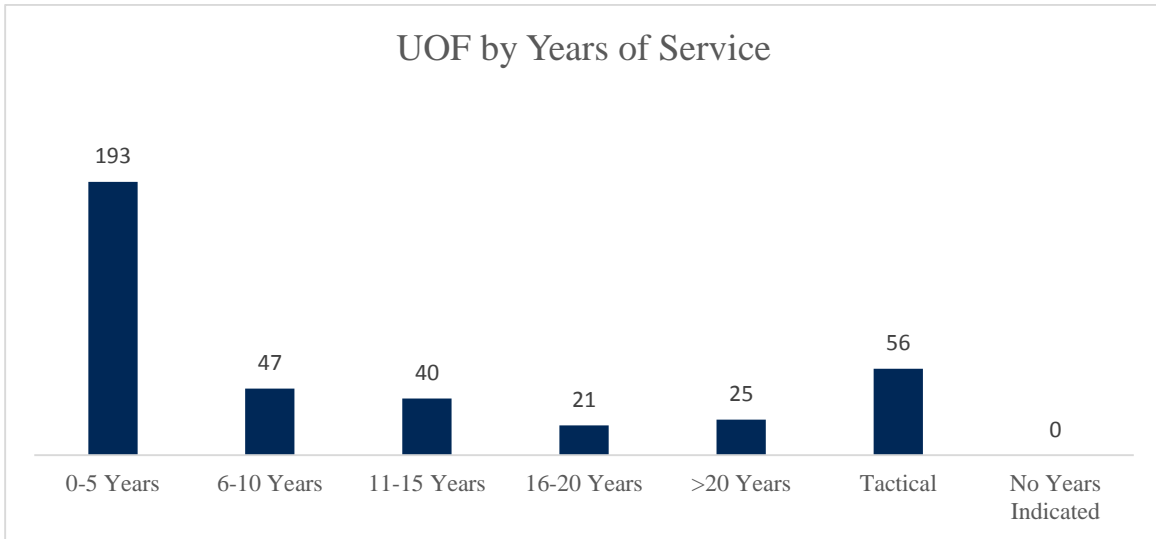


- uses force on another person, including through the use of a horse or a dog, that results in an injury requiring the services of a physician, nurse or paramedic and the member is aware that the injury required such services before the member goes off-duty.

*Note: the officer who has been designated by the supervisor to complete the report may still submit a team report on behalf of the remaining members even if some members are required to complete use of force reports individually.*

### Use of Force by Years of Service

For statistical purposes officers were grouped into the following *Years of Service* categories: 0-5 years, 6-10 years, 11-15 years, 16-20 years, >20 years, Tactical (team report), and No Years indicated.



Uniform Patrol is responsible for the majority of the 2022 UOF submissions (73%). The 0-10 *Years of Service* group accounts for approximately 74% of the officers who completed the *Years of Service* section

*Note \*Uniform Patrol and Years of Service data supplied by Human Resources.*

### Suspects/Police Officers Injured/Require Medical Attention

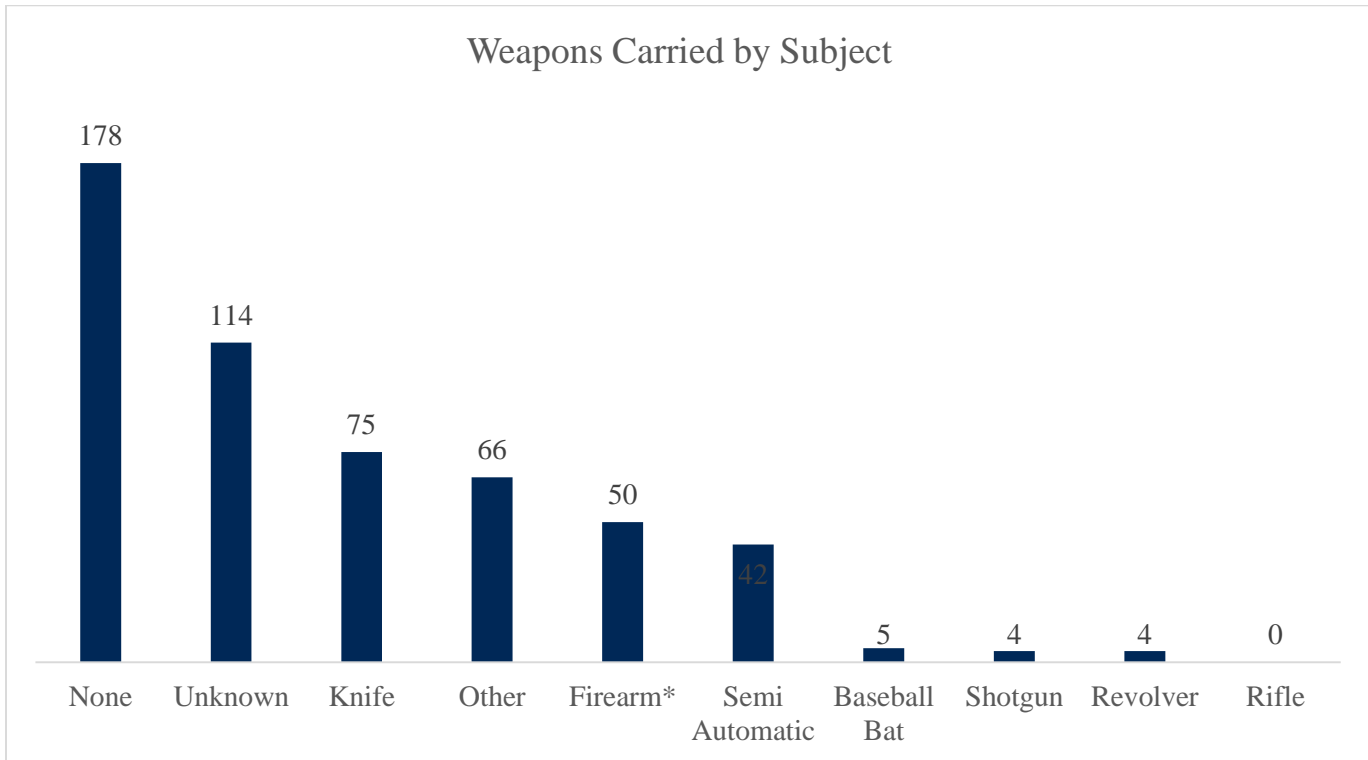
In 2022, there were **108** occurrences in which a subject, a police officer, or both, were reportedly injured.

Within the UOF reporting system, officers are unable to identify causes of the injury and can include incidents in which the subject was injured prior to police arrival. Of the **108** incidents, **68** were identified in which an injury occurred and medical attention was required, the majority of which were for CEW probe removal. Even though an individual is not injured, if they are apprehended under the Mental Health Act, this would also be counted as medical attention.



## Use of Force Incidents and Suspect Weapons

In 2022, **66%** of Use of Force reports involving a human subject reported that the subject had access to, or was carrying, or had information that the subject may have a weapon. Each use of force report was categorized with the most serious weapon and analyzed to summarize the most serious weapon involved. Firearms were reported as the most serious weapon in **12%** of UOF reports.



\* Firearm is the total weapons classified as semi-automatic, shotgun, revolver or rifle

## Use of Force by Subject Race

The Anti-Racism Act (ARA), 2017 outlines the initiatives to eliminate system racism, advance racial equity, and measure the strategy's progress across Public Sector Organizations (PSOs). A key component to the ARA is to identify disparities between racialized groups through data collection. In 2018, Ontario's Data Standards for the Identification and Monitoring of Systemic racism were passed by the Order in Council and articulated the data standards necessary to monitor racial disparities across PSOs. Police Services are required through O. Reg. 267/18 to capture and report deidentified data involving subject race using the UOF form submissions.

In 2020, police services began to submit UOF under a new form that required an officer to select a subject's perceived race (up to three subjects). The information is based on the perception of the officer involved in an encounter. Officers do not ask the race of the individual or find alternate ways to determine the race of the individual or individuals involved. The determination is based solely on the officer's perception of race at the time of the UOF incident.

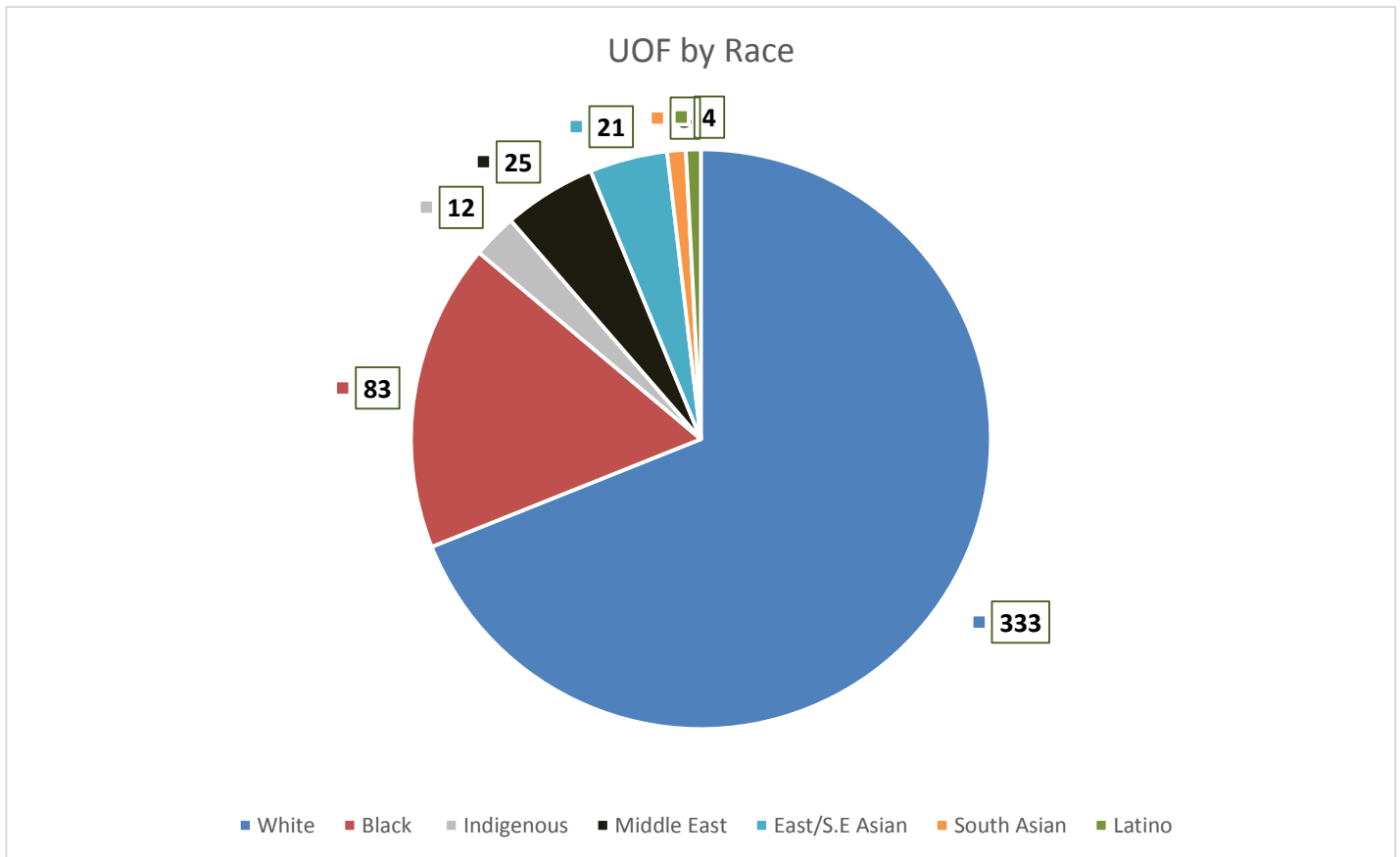
The Ministry of the Solicitor governs the mandate and methodology of collecting data from a use of force incident. The collection of perceived race data is an important step in understanding racial disparities; however, many Police Services have recognized a gap between the collection, contextualization, and ability to action findings via a Strategy. The Hamilton Police, along with other Services, is committed to supporting the ARA in a meaningful way and will be planning to adopt an Ontario Association of Chiefs of Police (OACP) endorsed Provincial Framework and Toolkit when designing a Race and Identity Based Data Strategy in Fall 2023. The below analysis will summarize some preliminary findings of use of force by race. Namely, UOF reports by subject race and disparity indices. While the below sections provide analysis, there is still a roadmap of



analytics, consultation, contextualization, and action planning that will better inform progress towards meeting the goals of the ARA.

The Ministry of the Solicitor General has identified the following race groups for officers to select from: Black, East/Southeast Asian, Indigenous, Latino, Middle Eastern, South Asian, and White. There is no option for officers to select unknown. Members are unable to select multiple categories per subject and can only report up to three subjects. Officers must identify a race unless the incident involves an animal.

The chart below summarizes the perceived races of **483** out of the **516** subjects identified from the **387** non-animal UOF reports. It is important to note that not all subjects are from Hamilton. In addition, the UOF report only has the ability to capture the first three subject's race. In 2022, there were instances where there were more than three subjects involved.



In 2022, HPS members submitted **387** UOF reports where force was used on at least one person, in which a total of **483** subjects were identified. The numbers in this report are based on UOF reports and do not represent the number of people police officers interacted with in 2022. For example, if four officers respond to an incident and all the officers use force; this event would count as four separate incidents. This would be reported to the Ministry that the police used force on four separate subjects despite it being a single incident. One limitation in this approach is that the statistics counts perceived race by subject and officers may perceive the subject differently.





## Disparity Index

The Ontario Anti-Racism Data Standards (Standards) were established to help monitor systemic racism and racial disparities within the public sector. The Standards is a companion document to the ARA and corresponding regulations. The following section provides analysis in compliance with Standard 27 of the Standards. The goal of the following section is to understand whether a disparity exists between the city's racial population distributions and the racial distribution of the population where the decision to use force has a greater propensity (i.e. Arrests and Apprehensions). The following section follows the guidance of Appendix D (Using Statistics Canada Data Sets for Benchmarking) and uses the recommended racial group mapping between Census 2021 Hamilton Census Division data and the Standards categories. The disparity index is a distributional comparison between two populations. If the division of population A against population B is one, then it suggests that the index is equal and no disparity. Values lower than 0.5 suggest an under-representation and values over 1.5 and 3.0 suggest over-representation and gross-over representation, respectively. It is important to note that disparity does not equate to discrimination and that it is imperative to understand the drivers of disparity. Part of the OACP's RIBD framework will contain a common model for contextualizing the drivers of disparities. The model below depicts the drivers into two broad categories: internal and external.



In applying the guided methodologies found in the Standards, Hamilton Police identified a disparity between the following racial groups: Black (gross over-representation), Latino (under-representation), and South Asian (under-representation). A methodological limitation of the DI between the UOF reports and population is that the two populations may not be identically comparable, as not all UOF subjects are residents of Hamilton. In review of subject information for further analysis, only 41% of involved subjects had a Hamilton Postal Code.



## Disproportionality Index: Use of Force vs. Hamilton Population

Perceived Race	Total	% of Incidents (A)	% of Population (B)	Disproportionality Index (A) / (B)
White	333	68.8%	74.4%	0.92
Black	83	17.2%	5.0%	3.41
Other	67	13.9%	20.5%	0.68
E/SE Asian	21	4.3%	6.1%	0.71
Indigenous	12	2.5%	2.2%	1.12
Latino	4	0.8%	2.0%	0.42
Middle Eastern	25	5.2%	4.0%	1.28
South Asian	5	1.0%	6.2%	0.17
<b>Total</b>	<b>483</b>			

### Interpreting the Disparity Index\*

- < 0.5 Under-representation
- > 1.5 Over-representation
- > 3.0 Gross Over-representation

Census Profile, 2021 Census - Hamilton, Census division [Census division], Ontario and Ontario [Province] (statcan.gc.ca)  
40.8% The number of 'Confirmed Hamilton Residents'

An officer's decision to use force is associated when the situation is to effect arrest, apprehend an individual, and to protect self and public. In following the Standards guidance, HPS has evaluated disparities between the following populations: Arrests, Apprehensions, and Arrests + Apprehensions. The disparity index between use of force and the distribution of the arrests of individuals is calculated using the same methodologies outlined within the Standards. The DI between UOF and HPS arrests identifies a disparity between the following race categories: East/South East Asian (gross over-representation) and Latino (under representation). The DI between UOF and HPS Apprehensions identifies the following disparities between racial categories: Black (over-representation), East/South East Asian (gross over-representation), and Middle Eastern (over-representation). In combining the arrest + apprehension population, the DI yield the following disparities: Black (over-representation), East/South East Asian (over-representation), Latino (under-representation), and Middle Eastern (over-representation).



## Disproportionality Index: Use of Force vs. Hamilton Police Arrests & Apprehensions

Perceived Race	Total	% of Use of Force Incidents (A)	Arrests			Apprehensions			Apprehensions + Arrests		
			HPS Arrests	% of Arrests (B)	DI - Arrests (A/B)	HPS Apprehension	% of Apprehensions (C)	DI - Apps. (A) / (C)	App + Arrests	Apprehensions & Arrests (D)	DI - Apps & Arrests (A) / (D)
White	333	68.9%	5,683	74.8%	0.92	1,673	80.0%	0.86	7,356	76%	0.91
Black	83	17.2%	897	11.8%	1.46	160	7.7%	2.25	1,057	11%	1.58
Other	67	13.9%	1,020	13.4%	1.03	258	12.3%	1.12	1,278	13%	1.05
E/SE Asian	21	4.3%	71	0.9%	4.65	26	1.2%	3.50	97	1%	4.34
Indigenous	12	2.5%	330	4.3%	0.57	94	4.5%	0.55	424	4%	0.57
Latino	4	0.8%	152	2.0%	0.41	32	1.5%	0.54	184	2%	0.44
Middle Eastern	25	5.2%	275	3.6%	1.43	51	2.4%	2.12	326	3%	1.54
<b>Total</b>	<b>483</b>		<b>7,600</b>			<b>2,091</b>			<b>9,691</b>		

### Interpreting the Disparity Index\*

- < 0.5 **Under-representation**
- > 1.5 **Over-representation**
- > 3.0 **Gross Over-representation**

\* 200 Individuals with no-race identity were excluded from the analysis

In this case, the racial disproportionality index is appropriate to assess whether there might be an overrepresentation or underrepresentation of racial groups in a service, program or function

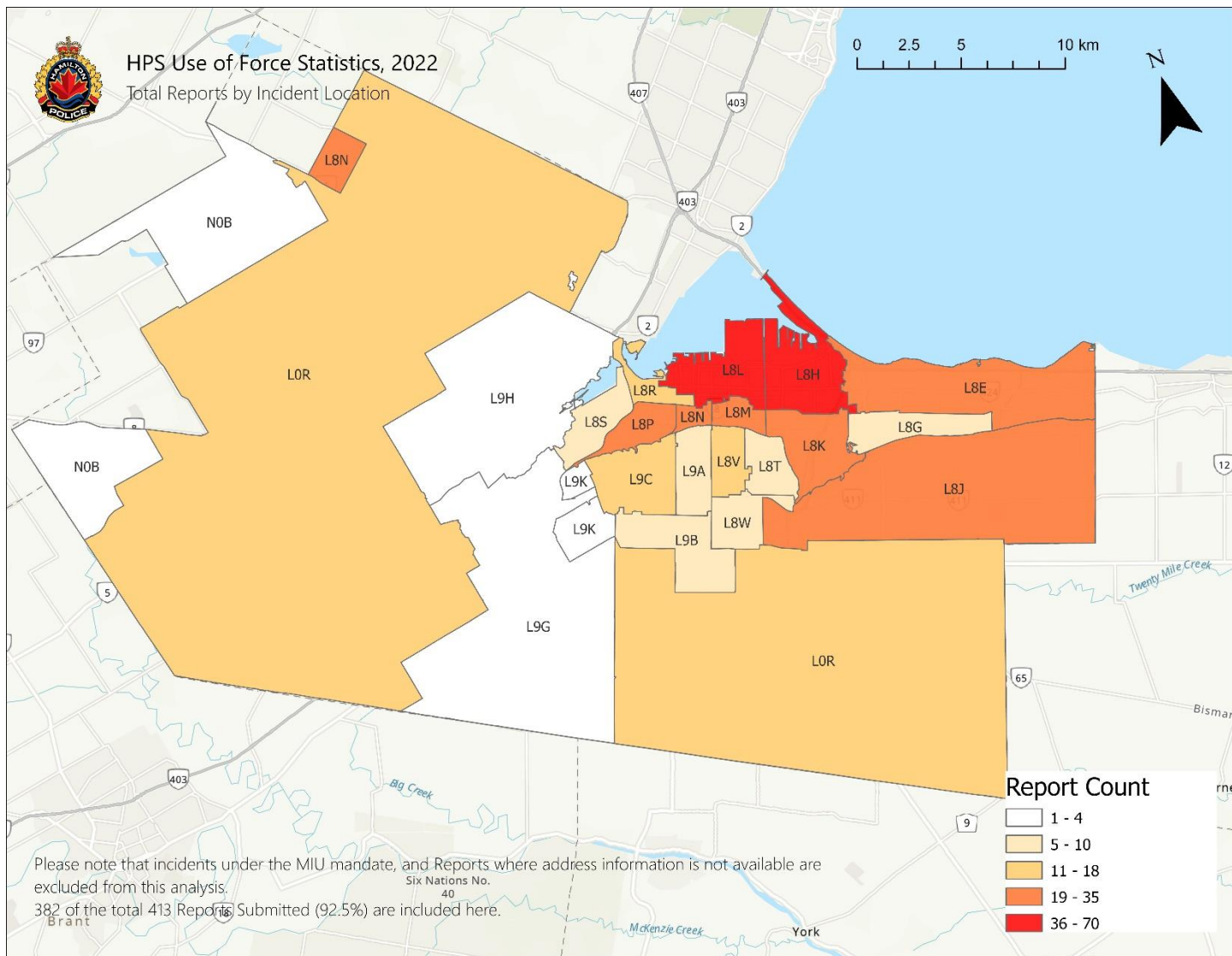


## Use of Force by Occurrence Locations

There were 382 records that had incident postal codes available (93.4% of total). For the reports that were not included:

- 13 has N/A locations
- 8 NULL locations
- 2 were under SIU mandate
- 1 Unknown Location

### Use of Force, by Occurrence Location (Hamilton Only)



The forward sortation area (FSA) corresponds to an occurrence and subject's first three characters of a postal code. In 2022, there were **382** occurrences in Hamilton that involved an incident where force was used. The below map highlights the distribution of the incident postal codes where force was used. Nearly all occurrences took place in Hamilton (n=92.5%). Due to StatCan 2016 FSA shapefile L8B was omitted from mapping.

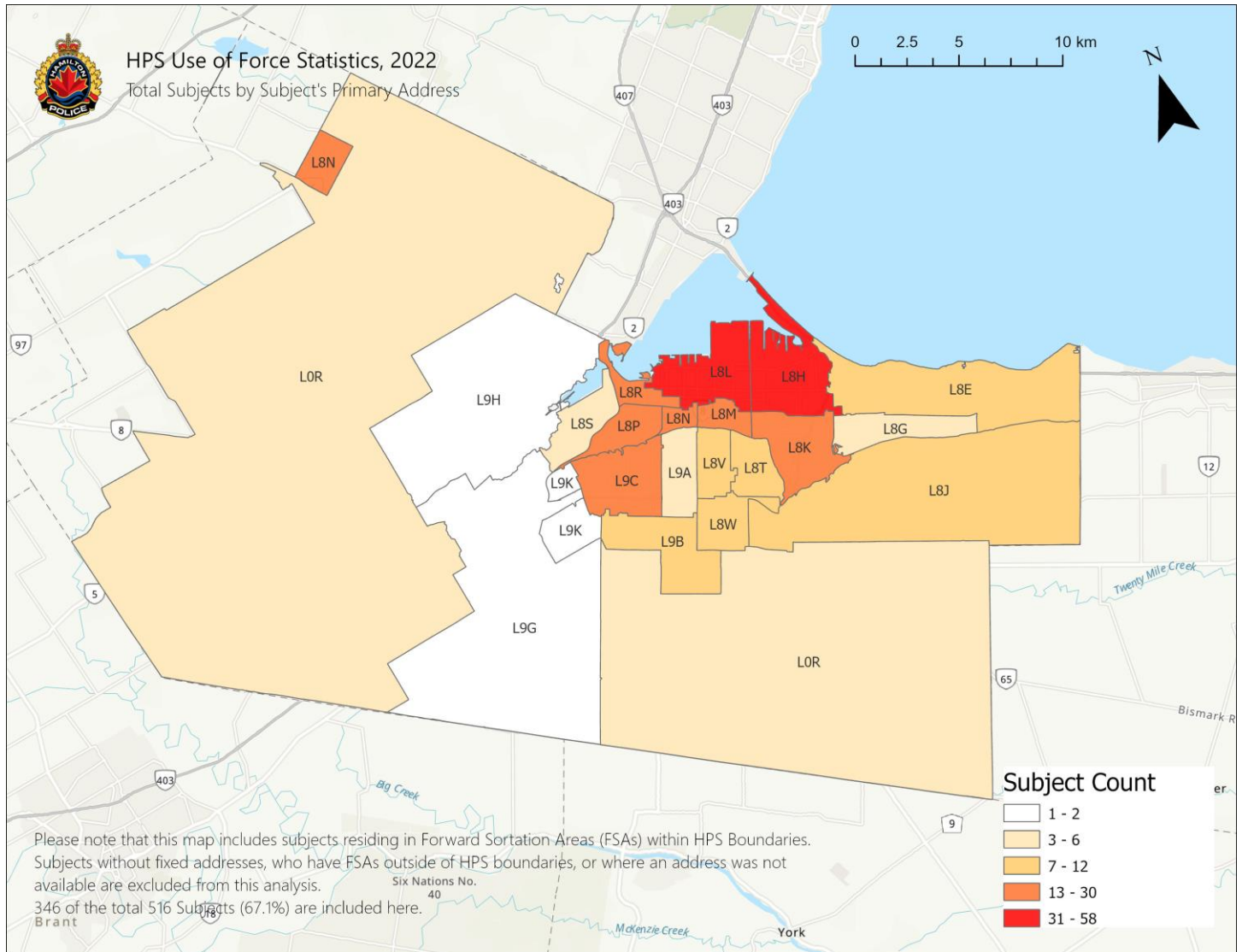


While most occurrences occurred in Hamilton, only 67.1% of subjects had a Hamilton FSA available for mapping.

For the subjects who are not included:

- A total of 111 are listed as NFA, Unknown or information is N/A, and
- A total of 59 are listed as Outside Hamilton.

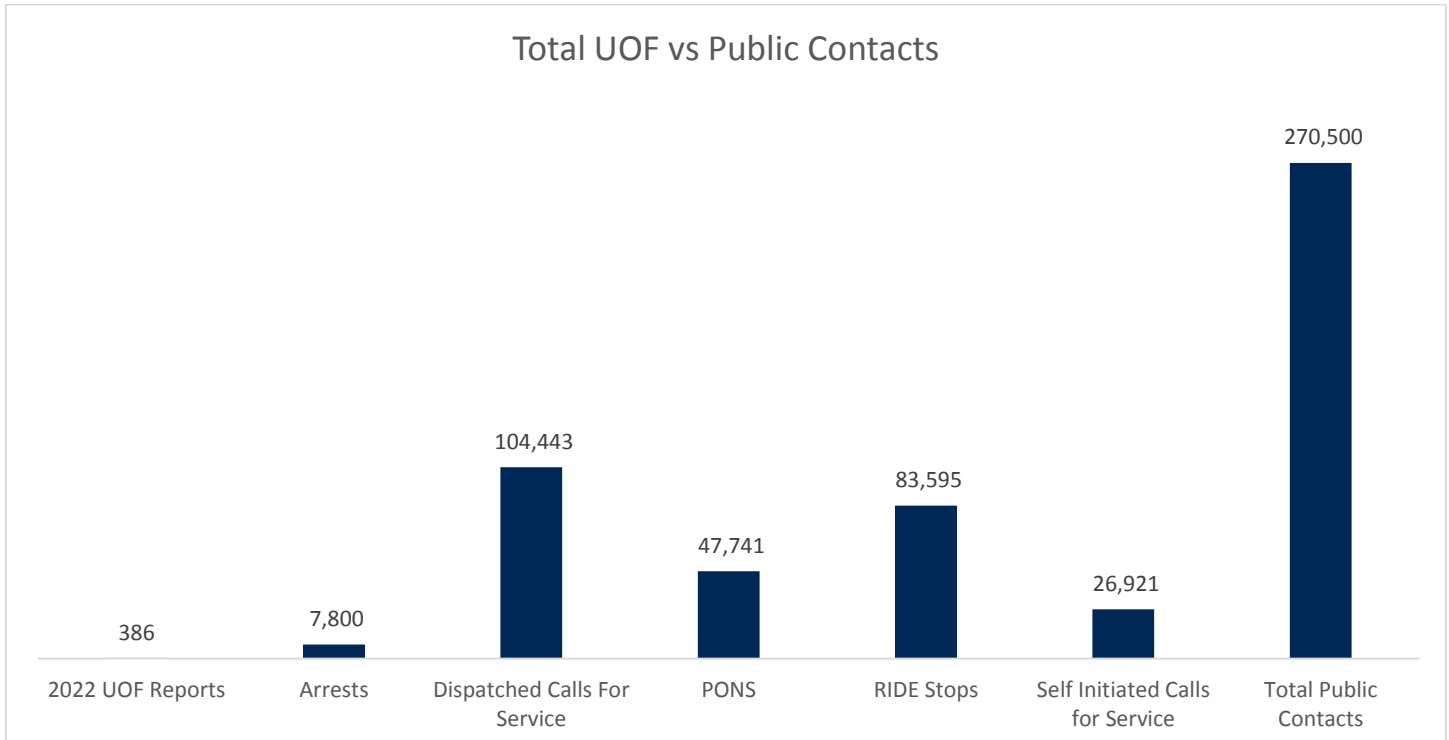
### Use of Force by Subject Location, Hamilton Only



## Use of Force in Relation to Public Contacts

In 2022, HPS members submitted 410 UOF Reports, which includes 23 animals that were euthanized. This ultimately means that there were 387 incidents where force was used in relation to a member of the public. Compared to the total number of contacts police had with the public which was 270,500, **0.14%** of contacts resulted in a UOF incident.

In comparison, UOF incidents vs. public contacts increased in 2022 (.014%) compared to 2021 (0.11%) but is lower than 2020 (0.18%) and higher than 2019 (0.12%).



NOTE \*Public Contact data supplied by the Crime Information Analysis Unit and the Traffic Unit.

## Conclusions

With the inclusion of CEW displays, the five-year average is **404** UOF incidents per year. There was a high of **431** incidents reported in 2020 and a low of **361** incidents in 2021. This information is based on the number of UOF Reports submitted by HPS members.

In 2022, officers discharged a firearm 26 times, which is more than the 19 incidents in 2021. Since 2018, HPS has averaged 26 discharges per year. The majority of discharges are for euthanizing injured animals. There were three incidents in 2022 where officers discharged their firearms at individuals (SIU investigations).

Uniform Patrol is most likely to encounter incidents requiring an application of force and therefore submit the most UOF reports.

This year's report captures the third year of tracking race in UOF encounters. At this time, it is too early to identify trends as there is not enough data to analyze.

The UOF incident rate for 2022 remains low at, **0.14% (387/270500)** when compared to the number of times police came into contact with the public. In 2022, HPS members had approximately **270,500** public contacts and used force **387** times (409 incidents minus the 23 animals euthanized).





Appendix – Use of Force Form



Ministry of the Solicitor General

Use of Force Report  
Police Services Act

Fields marked with an asterisk (\*) are mandatory. Check more than one box in each section, where appropriate.

Police Service *	Location Code (if applicable)
------------------	-------------------------------

Part A

Date (yyyy/mm/dd) *	Time Incident Commenced (24 hour) *	Time Incident Terminated (24 hour) *
---------------------	-------------------------------------	--------------------------------------

Report Type \*

<input type="checkbox"/> Individual	Length of Service (years completed) _____	Rank _____
<input type="checkbox"/> Team	Type of Team _____	Number of Police Officers Involved _____

Type of Assignment \*

Drugs     Foot Patrol     General Patrol     Investigation     Off-duty     Traffic  
 Other (specify) \_\_\_\_\_

Type of Incident \*

Alarm     Break and Enter     Domestic Disturbance     Homicide     Other Disturbance  
 Robbery     Serious Injury     Suspicious Person     Traffic     Weapons Call  
 Other (specify) \_\_\_\_\_

Police Presence at Time of Incident \*

Alone  
 Police Assisted (specify #) \_\_\_\_\_

Attire \*

Civilian Clothes  
 Uniform

Number of Subject(s) Involved in Incident \*

Animal/No subject (e.g., unintentional discharge)  
 One     Two     Three     Other (specify #) \_\_\_\_\_

Perceived Subject Race \*

What race category best describes the subject(s)?  
(Select only one per subject)

	1	2	3
Black	<input type="checkbox"/>	<input type="checkbox"/>	<input type="checkbox"/>
East/Southeast Asian	<input type="checkbox"/>	<input type="checkbox"/>	<input type="checkbox"/>
Indigenous	<input type="checkbox"/>	<input type="checkbox"/>	<input type="checkbox"/>
Latino	<input type="checkbox"/>	<input type="checkbox"/>	<input type="checkbox"/>
Middle Eastern	<input type="checkbox"/>	<input type="checkbox"/>	<input type="checkbox"/>
South Asian	<input type="checkbox"/>	<input type="checkbox"/>	<input type="checkbox"/>
White	<input type="checkbox"/>	<input type="checkbox"/>	<input type="checkbox"/>

Type of Force Used \*

(include all options used during incident and rank in sequence of use)

	Rank	Was Force Effective?	
		Yes	No
<input type="checkbox"/> Aerosol Weapon	_____	<input type="checkbox"/>	<input type="checkbox"/>
<input type="checkbox"/> Empty Hand Techniques – Hard	_____	<input type="checkbox"/>	<input type="checkbox"/>
<input type="checkbox"/> Empty Hand Techniques – Soft	_____	<input type="checkbox"/>	<input type="checkbox"/>
<input type="checkbox"/> Firearm – discharged	_____	<input type="checkbox"/>	<input type="checkbox"/>
<input type="checkbox"/> Firearm – pointed at person	_____	<input type="checkbox"/>	<input type="checkbox"/>
<input type="checkbox"/> Handgun – drawn	_____	<input type="checkbox"/>	<input type="checkbox"/>
<input type="checkbox"/> Impact Weapon – Hard	_____	<input type="checkbox"/>	<input type="checkbox"/>
<input type="checkbox"/> Impact Weapon – Soft	_____	<input type="checkbox"/>	<input type="checkbox"/>
<input type="checkbox"/> Other (e.g., conducted energy weapon, less lethal shotgun, "ARWEN") (specify) ▼	_____	<input type="checkbox"/>	<input type="checkbox"/>

Reason for Use of Force \*

Accidental     Destroy an Animal     Effect Arrest     Prevent Commission of Offence     Prevent Escape  
 Protect Public     Protect Self     Other (specify) \_\_\_\_\_

Type of Firearm Used (if applicable)

<input type="checkbox"/> Revolver	Number of Rounds Discharged _____
<input type="checkbox"/> Rifle	_____
<input type="checkbox"/> Semi-automatic	_____
<input type="checkbox"/> Shotgun	_____
<input type="checkbox"/> Other (specify) ▼	_____

Distance \* (between you and subject/animal at the time the decision was made to use force)

	Animal	1	2	3
Less than 2 metres	<input type="checkbox"/>	<input type="checkbox"/>	<input type="checkbox"/>	<input type="checkbox"/>
2 to 3 metres	<input type="checkbox"/>	<input type="checkbox"/>	<input type="checkbox"/>	<input type="checkbox"/>
3 to 5 metres	<input type="checkbox"/>	<input type="checkbox"/>	<input type="checkbox"/>	<input type="checkbox"/>
5 to 7 metres	<input type="checkbox"/>	<input type="checkbox"/>	<input type="checkbox"/>	<input type="checkbox"/>
7 to 10 metres	<input type="checkbox"/>	<input type="checkbox"/>	<input type="checkbox"/>	<input type="checkbox"/>
Greater than 10 metres	<input type="checkbox"/>	<input type="checkbox"/>	<input type="checkbox"/>	<input type="checkbox"/>



<b>Alternative Strategies Used (if applicable)</b>							
<input type="checkbox"/> Concealment <input type="checkbox"/> Cover <input type="checkbox"/> Verbal Interaction <input type="checkbox"/> Other (specify)							
<b>Weapons Carried by Subject(s) *</b>			<b>Location of Subject's Weapon (At time decision was made to use force)</b>			<b>Total Number of Rounds Fired by Subject(s) (if applicable)</b>	
	1	2	3		1		2
Baseball Bat/Club	<input type="checkbox"/>	<input type="checkbox"/>	<input type="checkbox"/>	At hand	<input type="checkbox"/>	<input type="checkbox"/>	<input type="checkbox"/>
Knife/Edged Weapon	<input type="checkbox"/>	<input type="checkbox"/>	<input type="checkbox"/>	Concealed on person	<input type="checkbox"/>	<input type="checkbox"/>	<input type="checkbox"/>
Revolver	<input type="checkbox"/>	<input type="checkbox"/>	<input type="checkbox"/>	In-hand	<input type="checkbox"/>	<input type="checkbox"/>	<input type="checkbox"/>
Rifle	<input type="checkbox"/>	<input type="checkbox"/>	<input type="checkbox"/>	<b>Location of Incident *</b>			
Semi-automatic	<input type="checkbox"/>	<input type="checkbox"/>	<input type="checkbox"/>	Outdoors	<input type="checkbox"/> Laneway	<input type="checkbox"/> Motor Vehicle	<input type="checkbox"/> Park
Shotgun	<input type="checkbox"/>	<input type="checkbox"/>	<input type="checkbox"/>		<input type="checkbox"/> Roadway	<input type="checkbox"/> Rural	<input type="checkbox"/> Yard
None	<input type="checkbox"/>	<input type="checkbox"/>	<input type="checkbox"/>		<input type="checkbox"/> Other (specify)		
Unknown	<input type="checkbox"/>	<input type="checkbox"/>	<input type="checkbox"/>	Indoors			
Other (specify) ▼	<input type="checkbox"/>	<input type="checkbox"/>	<input type="checkbox"/>	Private Property	<input type="checkbox"/> Apartment	<input type="checkbox"/> Hallway	<input type="checkbox"/> House
				Public Property	<input type="checkbox"/> Commercial Site	<input type="checkbox"/> Financial Institution	<input type="checkbox"/> Public Institution
					<input type="checkbox"/> Other (specify)		
<b>Weather Conditions *</b>							
<input type="checkbox"/> Clear <input type="checkbox"/> Cloudy <input type="checkbox"/> Fog <input type="checkbox"/> Rain <input type="checkbox"/> Snow/Sleet <input type="checkbox"/> Sunny							
<input type="checkbox"/> Other (specify)							
<b>Lighting Conditions *</b>							
<input type="checkbox"/> Dark <input type="checkbox"/> Daylight <input type="checkbox"/> Dusk <input type="checkbox"/> Good Artificial Light <input type="checkbox"/> Poor Artificial Light							
<input type="checkbox"/> Other (specify)							
<b>Person Injured</b>							
	<b>Medical Attention Required?</b>		<b>Nature of Injuries</b>				
	Yes	No	Minor	Serious	Fatal	Unknown	
Self	<input type="checkbox"/>	<input type="checkbox"/>	<input type="checkbox"/>	<input type="checkbox"/>			
Other Police Officer	<input type="checkbox"/>	<input type="checkbox"/>	<input type="checkbox"/>	<input type="checkbox"/>	<input type="checkbox"/>	<input type="checkbox"/>	
Third Party	<input type="checkbox"/>	<input type="checkbox"/>	<input type="checkbox"/>	<input type="checkbox"/>	<input type="checkbox"/>	<input type="checkbox"/>	
Subject 1	<input type="checkbox"/>	<input type="checkbox"/>	<input type="checkbox"/>	<input type="checkbox"/>	<input type="checkbox"/>	<input type="checkbox"/>	
Subject 2	<input type="checkbox"/>	<input type="checkbox"/>	<input type="checkbox"/>	<input type="checkbox"/>	<input type="checkbox"/>	<input type="checkbox"/>	
Subject 3	<input type="checkbox"/>	<input type="checkbox"/>	<input type="checkbox"/>	<input type="checkbox"/>	<input type="checkbox"/>	<input type="checkbox"/>	
Narrative: (If no occurrence report) – Do not include personal names or information.							
Reviewed by Supervisor?	<input type="checkbox"/> Yes <input type="checkbox"/> No	Recommended Post Traumatic Incident Counselling?	<input type="checkbox"/> Yes <input type="checkbox"/> No	Recommended Other Training?	<input type="checkbox"/> Yes <input type="checkbox"/> No	Date (yyyy/mm/dd) *	
						Reviewed by Training Analyst?	
						<input type="checkbox"/> Yes <input type="checkbox"/> No	



**Part B**

Incident Number  Officer Involved (name, rank and badge number) \*

Date of last use of force refresher training (yyyy/mm/dd)  Would you like to participate in an interview with a training sergeant/analyst to discuss this incident and/or use of force training?  
 Yes  No

Additional Training Recommended By:  Training Analyst  Supervisor Type of Training Recommended

[Save Form](#)

[Check for Incomplete Fields](#)

[Print Form](#)

[Clear Form](#)

[Training Analyst Only  
Submit to Solicitor General](#)

